

2 FOX STREET  
CLITHEROE  
BB7 2AQ

Offers around £189,950



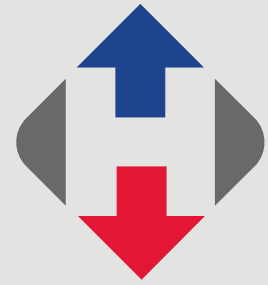
- Bay fronted end terraced house
- 3 bedrooms, 3-piece bathroom
- 2 separate reception rooms
- Located on a small cul-de-sac
- Close to Clitheroe town centre
- Fitted kitchen with oven & hob
- Good-sized enclosed yard
- 85 m2 (919 sq ft) approx.

[honeywell.co.uk](http://honeywell.co.uk)

**An attractive bay fronted end terrace situated on this small cul-de-sac which is only a short walk from Clitheroe town centre, the train station and Pendle Primary School.**

**The property has accommodation arranged across two floors with an entrance hall, two separate reception rooms and kitchen at the rear. Upstairs there are three bedrooms and a 3-piece bathroom.**

**Externally there is a small forecourt garden to the front and a good-sized enclosed yard at the rear. The property is offered for sale chain free and is ideal for a first-time buyer or investor.**



**LOCATION:** From our Clitheroe office travel along Castle Street passing the library into York Street. At the roundabout turn left into Well Terrace and right at the next roundabout into Pimlico Road. Fox Street is the fourth turning on the left-hand side.

**ACCOMMODATION:** (Imperial dimensions in brackets: all sizes approximate):-

**ENTRANCE:** Through half-glazed PVC front door into:

**ENTRANCE VESTIBULE:** With half-glazed stained glass door leading to:

**HALLWAY:** With feature coved cornicing and plasterwork and staircase off to first floor.

**SITTING ROOM:** 3.2m x 3.3m (10'6" x 10'11"); with coved cornicing, television point, bay window and meter cupboard.

**LOUNGE:** 4.2m x 4.1m (13'11" x 13'5"); with BT broadband point, television point and understairs storage cupboard with electric light.

**KITCHEN:** 2.4m x 4.4m (7'10" x 14'4"); with a fitted range of wood effect laminate wall and base units with complementary laminate work surface and tiled splashback, integrated double electric oven, 4-ring stainless steel gas hob with extractor over, stainless steel sink unit with mixer tap, plumbing for a washing machine and space for dishwasher or tumble dryer, wall-mounted Baxi central heating boiler and half-glazed PVC door to rear yard.

**FIRST FLOOR:**

**LANDING:** With loft access.

**BEDROOM ONE:** 4.4m x 3.3m (14'4" x 10'11"); with coved cornicing and feature decorative cast iron fireplace.

**BEDROOM TWO:** 2.2m x 3.1m (7'2" x 10'1").

**BEDROOM THREE:** 2.1m x 3.0m (6'9" x 10'0").

**BATHROOM:** 3-piece white suite comprising a low suite w.c. with push button flush, pedestal wash-hand basin with chrome mixer tap and a panelled bath with chrome shower-tap fitment, part-tiled walls and extractor.







**OUTSIDE:** There is a forecourt front garden which is gravelled for easy maintenance with a paved pathway to the front door. To the rear there is a good-sized enclosed rear yard with stone boundary wall and gated access.

**HEATING:** Gas fired hot water central heating system complemented by double glazed windows in PVC frames.

**SERVICES:** Mains water, electricity, gas and drainage are connected.

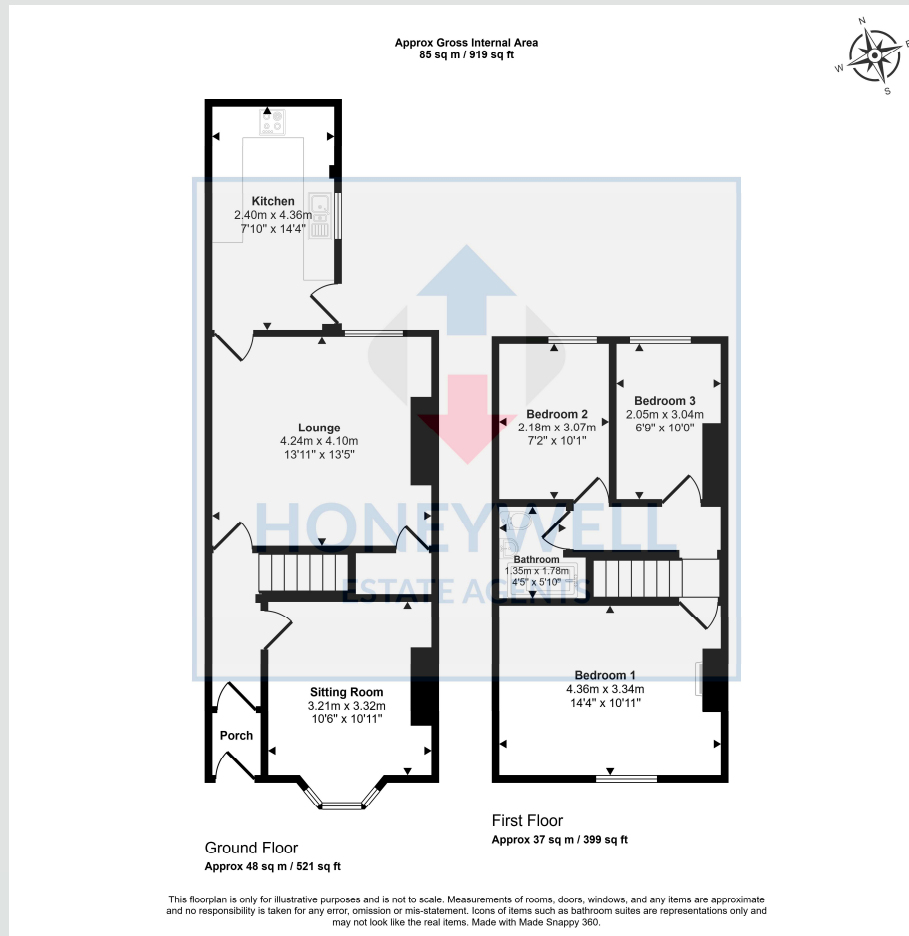
**COUNCIL TAX BAND C.**

**EPC:** The energy efficiency rating for this property is D.

**VIEWING:** By appointment with our office.

**SELLING YOUR OWN HOUSE?** We will be happy to provide free valuation and marketing advice, without obligation - please ask for details.





2 Fox Street, Clitheroe, BB7 2AQ  
CD/CJ/290125

**Selling Your House?** We will be happy to provide free valuation and marketing advice, without obligation - please ask for details

1 Castlegate, Clitheroe. BB7 1AZ  
T: 01200 426041 E: houses@honeywell.co.uk



 HoneywellEstateAgents

 HoneywellAgents

**honeywell.co.uk**

Please note: These particulars are produced in good faith, but are intended to be a general guide only and do not constitute any part of an offer or contract. No person in the employment of Honeywell Estate Agents Ltd has any authority to make any representation or warranty whatsoever in relation to the property. Photographs are reproduced for general information and do not imply that any item is included for sale with the property.